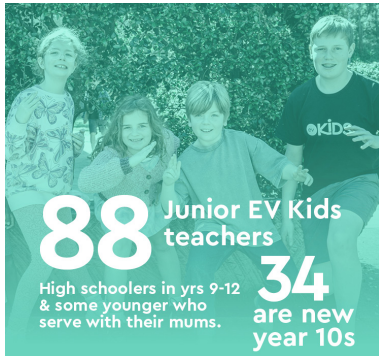


2025 EV CHURCH ANNUAL REPORT



88 Junior EV Kids teachers
High schoolers in yrs 9-12 & some younger who serve with their mums.

34 are new year 10s



2000
People attending church on Sundays



83
Adults & teens joined Growth Groups – first time



1400
People in 125 Growth Groups each week



51
professions of faith in Jesus



PHAT
EV YOUTH Live Phat Album Recording



36
Adults & teens baptised in 2025



New
EV Kids classrooms completed & in use



148
Teens in G-Teams each week



30
Teens moved from youth into Growth Groups & Ministry teams at EV Night



ev summerfest
KIDS
859 Kids & teens each day in 2026
(258 do not attend church)



1000
Adults & teens serving in Ministry teams

YEAR IN REVIEW 2025

ANDREW HEARD – SENIOR PASTOR & CHURCH COUNCIL CHAIRMAN

So much to give thanks for, and so much to pray about! It has been a massive 12–14 months. We are full of joy in all that the Lord is doing among us. Praise him, and pray that he does much more!

We have prayed for many years to see a real movement of God and it feels like we are in the midst of such a thing. It is too much to suggest it is revival. But there is a movement of God that we haven't seen in prior years. More and more people are being drawn to consider the things of Christ. A great number of those who visit our services are genuine seekers. We've always had this kind of dynamic. God has always been bringing people to himself. It just seems that there is more of it in recent months. We're not alone in experiencing this. Many other churches report similar things. But for us, the number is somewhat greater than most.

For all of this, we give much thanks.

And ironically, all of this is happening at the same time as many in our society are saying the church is in crisis. God does his best work when things seem darkest. We, of all people, can live in constant hope and assurance that God has things in hand. We never need despair. God does what he does that we might not rely on ourselves, but on him who raises the dead. Our faith is in him. And it's to him we give thanks.

Throughout this report, you will see many of the details that paint the wonderful picture.

But, as we often say, there is still so much to do.

As many as are coming, there are still tens of thousands yet to hear the news of Jesus and find the life that is ours in him. This matters so much. To be without Christ is to be without God and without hope – eternally. We therefore rejoice in all that is happening, but are then stirred to pray to the lord of the harvest to do so much more. His answer will in part be – "get involved with me in all I'm doing!" Do whatever you can to



Follow the QR Code to watch a video summary of the year.



join in the mission to seek and save the lost; and mature the saints he calls to himself.

This is particularly important at the moment. So jump in!

Behind all of this is the less visible administration and organisational work that happens week by week, day by day. Key to this is our Church Council. This group is an elected body of men and women from our church who devote themselves to managing the finances, property, and legal side of our church. They meet monthly as a formal body but invest considerable time between formal meetings making sure church is working as best it can. We thank God for them. And pray that they might (continue to!) bring great wisdom to the work.

At our Annual Thanksgiving and General Meeting you will hear the report on this back-end work.

Brothers and sisters, we have so much to give thanks for. Rejoice! And pray the Lord might protect his precious church from the attacks of Satan, and might continue to bless us with growth. Unless the Lord builds the house, we labour in vain. But with him, all things are possible!!

Warmly in Christ

Andrew



OUR VISION

The last words of the Lord Jesus before he ascended to his Father's right hand was go and make disciples, of all nations.

This was our driving concern when we started church, some 30 years ago. We didn't want to just 'put church on' – go through the motions, and go home again. We wanted to really make a difference. We wanted, under God, and by his grace, to do two things - see people become disciples, and then grown as disciples. We call it deep and wide. Deep; mature disciples. Wide; more people reached. And we longed, and prayed that this might be not just ones or twos, but hundreds, thousands. We wanted the whole Central Coast to be impacted by the gospel of the Lord Jesus, saved to find life salvation.

This desire underpinned our vision to see 10% of the Central Coast saved and in Bible-teaching churches.

OUR STORY

When we started, with only a dozen people in a lounge room, this vision was so far out of reach that I think many felt it was just a happy dream. And it was. What hope did such a small group of people have in making such a difference to so many lives? Humanly speaking, none.

But look what God has done! We're not yet at 10%. But God has grown his work massively, wonderfully. There are now three church plants closely connected with us that are all thriving and growing (as well as other local churches working faithfully to present the gospel of Christ.) But praise God for his work here among us. We've seen so many won to Christ, saved and established in the faith. God truly has done more than we could have imagined.

SO MUCH MORE TO DO

Yet there is so much more to do. Over 300,000 people live on the Coast around us. Even with our growth, and that of other Bible churches, we are still not even a third of the way towards reaching 10%. We're closer than we were! However, over 95% of those that live around us are lost without Christ. We want to always grieve over this fact. Our church is growing, yet we're not yet even close to reaching 10%. There is still more to do!



MAKING DISCIPLES

The Apostle Paul's heart was to present everyone fully mature in Christ (Colossians 1:28-29). We've broken down that goal into five key outcomes:

MAGNIFICATION

We exist for God's glory, his purpose and his delight. Living for his glory is the first and most important purpose in life. This impacts our work, family, ambitions and all that we do. All of life is worship, as we seek to glorify God in all that we do. The magnification teams help us make much of God, especially in and through our Sunday church services.

MISSION

God is at work in the world, and he wants us to join him. He invites us to participate in the greatest, largest, most diverse and significant cause in history – his kingdom. We are saved to serve the spreading of the good news. The mission teams support this by running events like Life and Summerfest.

MEMBERSHIP

We have been gathered by God into his great treasure – the church.

The membership teams work hard to see people connected into the church family and growing in depth of relationship. They welcome people to our gatherings, run events like Startup and facilitate warm community times together. They run our care ministries such as funerals, facilitating counselling and practical care for those in need.

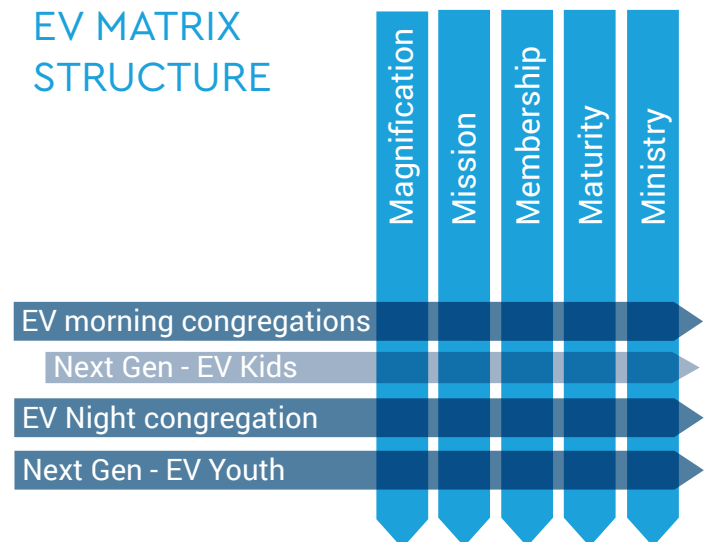
MATURITY

Spiritual growth is about 'becoming' more like Christ. The Christian life is about building an intimate relationship with Jesus, as the Holy Spirit changes us from the inside out, that we might love God and others as he intends. The maturity team supports the growth group life of the church family, among other things.

MINISTRY

God has given each of us the opportunity to serve him as we serve others and make a real difference in our community. We are all shaped by God with individual gifts and talents that are to be used to support and grow the body of Christ. The ministry teams help us find a way to serve in church family life.

EV MATRIX STRUCTURE



MINISTRY STAFFING

HOW STAFF ARE ORGANISED

In order for EV Church to grow as we have and to be reaching the Central Coast with the Gospel in the way we are, it has been necessary to think carefully about how best to structure staffing. This careful planning has led us to build ministries and organise our staffing across the two dimensions of Outcome and Focus areas.

OUTCOME AREAS

In each area of church life, the tasks are somewhat similar. Leaders work to raise up a growing team of church members, to not only carry out the work that exists at present, but make it possible to take the work further. This therefore means that every staff member's primary task is mobilising church members, recruiting them, equipping them, supporting them, setting up teams with leaders over each so that more and more can join in the work.

The adjacent table shows how the various pastoral staff are deployed. Though staff generally focus in one area, they will also contribute to a number of others. Each of the outcome areas; Magnification, Mission, Membership, Maturity, and Ministry have a lead pastor pushing this work forward.

All the EV gatherings, along with the Next Generation (Next Gen) work in EV Kids and EV Youth, also have leaders who take responsibility to ensure that all the outcome areas are applied in a helpful way in their particular context. These are called focus teams, and sit under the senior leadership.

THE NUMBERS

In 2026, EV has 24 pastoral staff. As some work part time this is equivalent to 20.9 full-time staff, not including the ministry support staff.

As we take the great commission seriously and seek to see 10% of the Central Coast won for Christ, we must set ourselves to growth by the adding of new people to our congregations. By God's grace, we must bend every effort to mobilise our God-given resources, to build up every saint for the works of service he calls each of us to do. Having an effectively organised and suitably resourced staff team plays an important part in this gospel project.

We should give thanks for how the Lord has provided to this point and pray that he would supply our needs as we step forward in faith.

MTS COACHING

EV is committed to raising up the next generation of gospel leaders through the MTS program (Ministry Training Strategy).

To do this well, each MTS trainee is given a Coach from among our Pastoral Staff team, who helps them to grow as faithful and competent leaders for Christ.

STUDENT WELLBEING WORKER

EV also provides a Student Wellbeing Worker to Gosford East Public School.

PASTORAL STAFF TABLE

Note: In 2026 EV has 24 pastoral staff. As some work part-time, this is equivalent to 20.9 full-time staff. (Ministry Support staff listed on page 18).

			Outcomes					Focus			
			Magnification	Mission	Membership	Ministry	Maturity	EV Morning	EV Night	EV Youth	EV Kids
Ministry Leads	Andrew Heard	Senior Pastor	●	●	●	●	●	●	●	●	●
	Andrew Mitchell	Executive Pastor	●	●	●	●	●	●	●	●	●
	Trevor Hodge	Magnification Lead Pastor	●					●	●	●	
	Adrian Haynes	Mission Lead Pastor		●				●	●	●	
	Ray Copland	Membership Lead Pastor			●			●	●	●	
	Matt Evans	Maturity Lead Pastor					●	●	●	●	
	Ben Lattimore	Ministry Lead Pastor				●	●	●	●	●	
Focus	Jez Reynolds	EV Morning Focus & Communications Pastor	●	●	●	●	●	●			
	Grahame Fuller	EV Kids Lead Pastor									●
	Dan Ford	EV Night Focus Pastor	●	●	●	●	●		●		
	Duncan Sutherland	EV Youth Focus Pastor	●	●	●	●	●			●	
Team	Tamara Barwise					●	●		●	●	
	Tania Cklamovski			●				●			
	Madi Farmer*									●	
	Luke Fotheringham		●					●			
	Kirrily Griffiths										●
	Rhett Harris*						●	●			
	Phil Heard						●	●			●
	Jo Hill*							●			●
	Lucy Hill										●
	Sandy Proctor*									●	
	Kareena Seifert*					●	●	●			
	Ethan Viglione		●					●	●	●	
	Tim Wallace			●					●		

* Part time staff

MAGNIFICATION

OUTCOME: That we make much of God – in our hearts, lives and church together.

Growing Together

We pray our church family will:

- Grow more and more in our knowledge, trust, love and enjoyment of our God.
- Look forward to gathering each week to praise and adore him, hear and respond to his Word, and teach and encourage one another.
- Rejoice always, pray continually, and give thanks in all circumstances.

Celebrating & Giving Thanks For God's Work in 2025

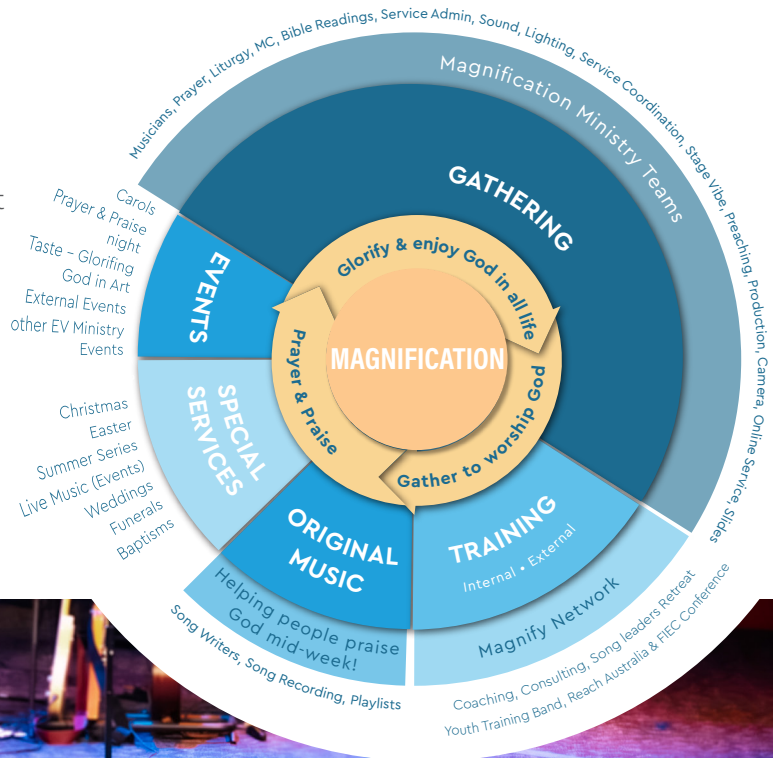
- That over 2000 of us gather each weekend to fix our attention and affections on Christ.
- For everyone who serves (often behind the scenes) every weekend to help that happen – around 50 people each week across our services.
- For the growth of our Youth Magnification team and the first Phat Live recording.
- For the teams and technology to continue to stream for those unable to join in person and a growing deaf community with Auslan interpreting.

- The many opportunities we have to serve, resource and encourage other churches across Australia and beyond.

2026 LEADERSHIP TEAM:

- **Trevor Hodge**
- Luke Fotheringham
- Ethan Viglione
- Neo Titus (MTS)
- Jolene Schultz – Team Support

Serving alongside another 160 volunteers



MISSION

OUTCOME: To see people saved to Christ and on mission for Christ.

Growing Together

We pray our church family will:

- Stretch sacrificially to see the gospel go out.
- Regularly see people saved as they come to believe the gospel.
- Firmly establish new Christians in the faith.
- Pray God will continue his salvation work here on the Coast and around the world.

Celebrating & Giving Thanks For God's Work in 2025

- We rejoice in seeing so many people investigating the claims of Christ, with 213 enquirers attending Life during 2025, and 51 professing faith in Christ as a result.
- We saw more school aged kids and youth at Summerfest January 2026 than ever before with an average of 859 each day. 258 of these were not attending any church.
- Summer Series January 2026 was the biggest Summer Series ever.
- We baptised 36 adults and teenagers during 2025.

2026 LEADERSHIP TEAM:

- **Adrian Haynes**
- Tim Wallace (Intern)
- Reece Wallace (MTS)
- Fiona Hodge
- Mel Sheath
- Kelly Haynes – Team Support

Serving alongside another 70 volunteers.



MEMBERSHIP

OUTCOME: To warmly and intentionally gather in all people who come to EV Church.

Growing Together

We pray our church family will:

- Have a growing and deep sense of belonging to God's gathered family.
- Genuinely welcome and connect people warmly into God's family.
- Love, bear with and care for our brothers and sisters as we walk together.

Celebrating & Giving Thanks For God's Work in 2025

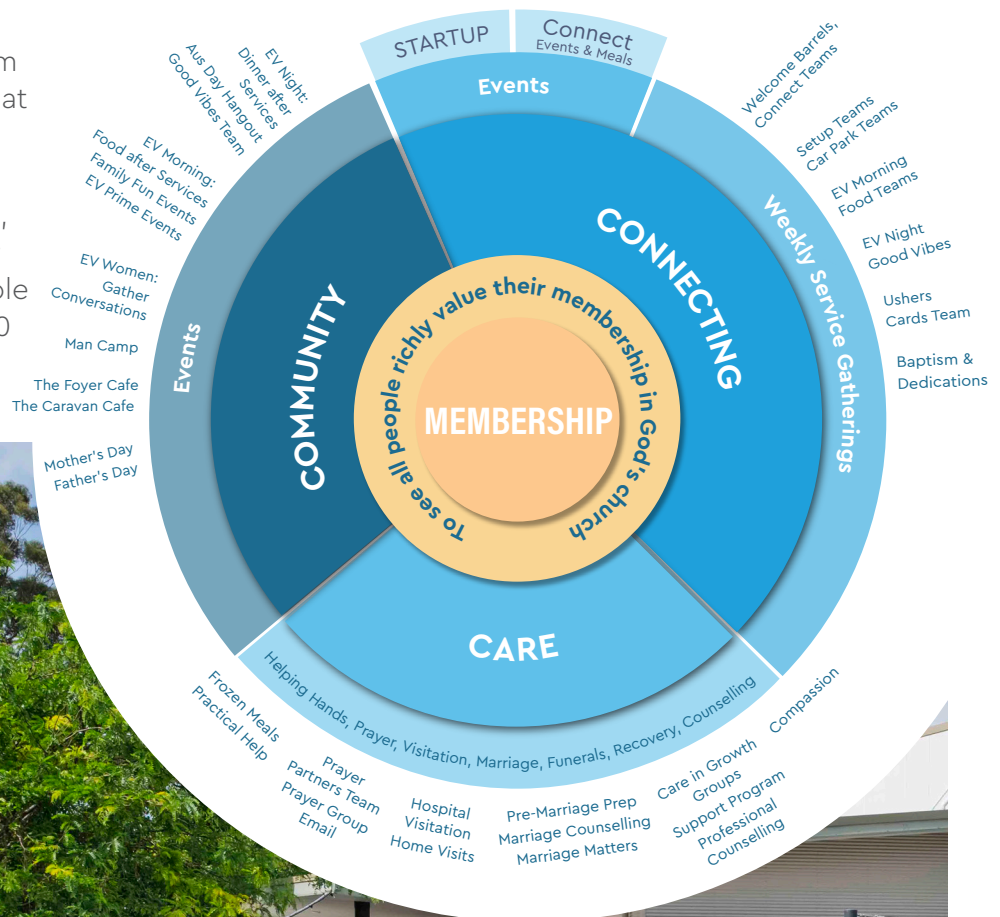
- 145 people joined our church family across 8.30, 10.30 and 6pm.
- 67 people joined growth groups for the first time.
- 30 teenagers graduated from Youth and landed in groups at EV Night.
- For the wonderful teams of people who cleaned, set up, packed down, managed car parking, who made it possible to provide more than 40,000 meals, 20,000+ coffees and more.

- For the teams of volunteers who visited the sick, cared for those in need, helped run 15 funerals to help families say goodbye to loved ones, ran Recovery and more.

2026 LEADERSHIP TEAM:

- **Ray Copland**
- Tania Cklamovski (Morning)
- Ben Thomas (MTS – Morning)
- Holly Stewart (MTS – Night)
- James Stewart (MTS – Night)
- Abigail Verster (Youth)
- Sophie Totonjian – Team Support

Serving alongside another 382 volunteers.



MATURITY

OUTCOME: To know God deeply through his word and prayerfully depend on him in our lives together.

Growing Together

We pray our church family will:

- Have the Word of Christ dwelling richly among us; transforming our minds, words and lives.
- Continue to live out the word of God in Christian life together, spurring one another on in love and good deeds.

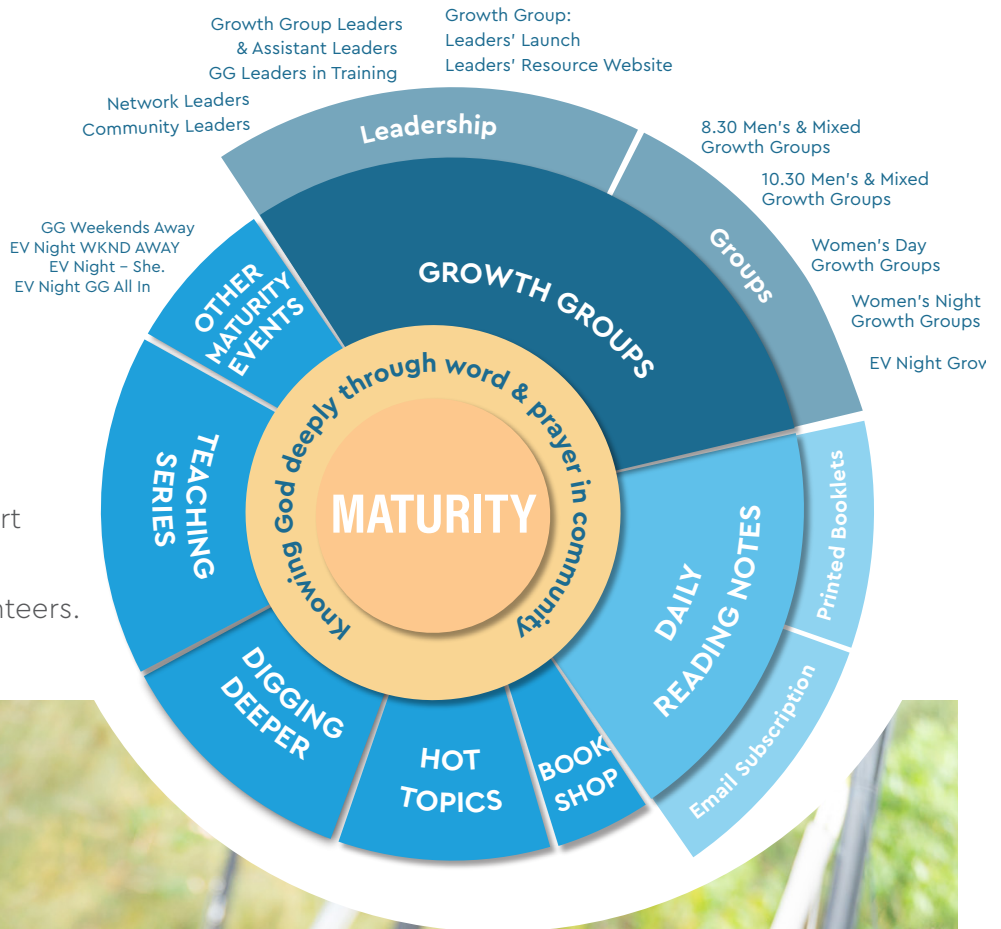
2026 LEADERSHIP TEAM:

- **Matt Evans**
- Tamara Barwise
- Jacob de Witte (MTS)
- Derek Fleming
- Rhett Harris
- Phil Hayes
- Cathie Heard
- Phil Heard
- Ben Lattimore
- Kareena Seifert
- Emily Christoforou – Team Support and KidzBiz Director

Serving alongside another 257 volunteers.

Celebrating & Giving Thanks For God's Work in 2025

- More and more people joined Growth Group throughout 2025. There are now around 1400 people gathering across 125 Groups meeting each week.



MINISTRY

OUTCOME: To see EV Church grow in our heart to gladly, sacrificially engage in the work of the Lord, and to see all areas of church life resourced with healthy layers of leadership and effective teams.

Growing Together

We pray our church family will:

- Grow in our likeness of Jesus, having glad and sacrificial hearts to serve others. Firstly in the Work of the Lord, and secondly in our general love of neighbour.
- Raise up more and more gospel-hearted people to serve as volunteer leaders and full time gospel workers.

2026 LEADERSHIP TEAM:

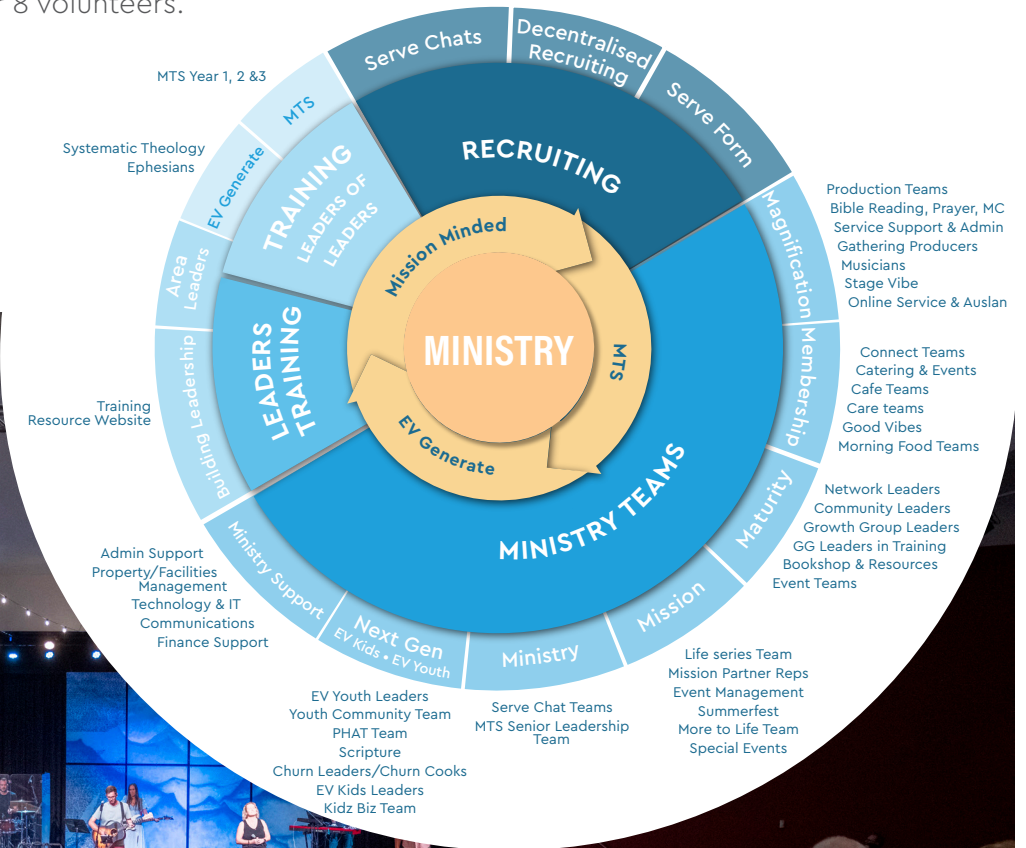
- **Ben Lattimore**
- Tamara Barwise
- Dan Ford
- Kareena Seifert
- Tess Latella – Team Support

Serving alongside another 8 volunteers.

Celebrating & Giving Thanks For God's Work in 2025

We praise God that:

- That there are now nearly 1000 adults and youth serving in ministry teams across our church.
- That there is a strong culture of young people giving themselves to ministry at EV Night, EV Youth and EV Kids, with many considering full time gospel ministry in the future.
- For the many men and women taking responsibility to lead various ministry teams across church and serving faithfully year after year.
- For the biggest ever cohort participating in our EV Generate program while giving themselves to significant ministry.



NEXT GEN: ev KIDS

OUTCOME: To see an increasing number of children engaged with God's word and every individual disciplined.

Growing Together

We pray our church family will:

- Invest deeply in the discipleship of children.
- Raise the next generation to love, serve and honour the Lord.
- See non-Christian children come to faith.
- Disciple and train our youth and young adults to be godly disciples, good Bible-handlers and solid leaders through their service in EV Kids.

2026 LEADERSHIP TEAM:

- **Grahame Fuller**
- Phil Heard
- Kirrily Griffiths
- Jo Hill
- Lucy Hill
- Ben Thomas (MTS)
- Carolina Redondo – Team Support

Serving alongside another 240 volunteers.

Celebrating & Giving Thanks For God's Work in 2025

- Our kids numbers grew throughout 2025, heading into the new year with around 390 kids coming along each week.
- The two new classrooms were completed by the end of 2025, following the generosity of our church family.
- Lots of our great teachers are continuing, and many wonderful new teachers have joined the team in 2025.
- In Term 4, 34 year 10's were trained to become EV Kids junior teachers. And in 2026, we have more junior teachers (year 10–12s) than ever before! A great encouragement to see how keen and able our youth are in serving, and a great joy to see them being disciplined and trained as they serve.
- 2026 has started wonderfully with new kids settling well into their classes, including the additional class we've started.



NEXT GEN: EV YOUTH

OUTCOME: To see the teens of the Central Coast know Jesus and enjoy him forever.

Growing Together

We pray our church family will:

- Grow in number, as our youth invite their friends to come and hear the good news.
- Grow in depth, as our youth are challenged and changed by God's word on Fridays, Sundays and at our many camps like PHAT and Wintercon.
- Grow in its loving character; as our youth build one another up in community, serve in various ministries and welcome the outsider to belong in our community.

2026 LEADERSHIP TEAM:

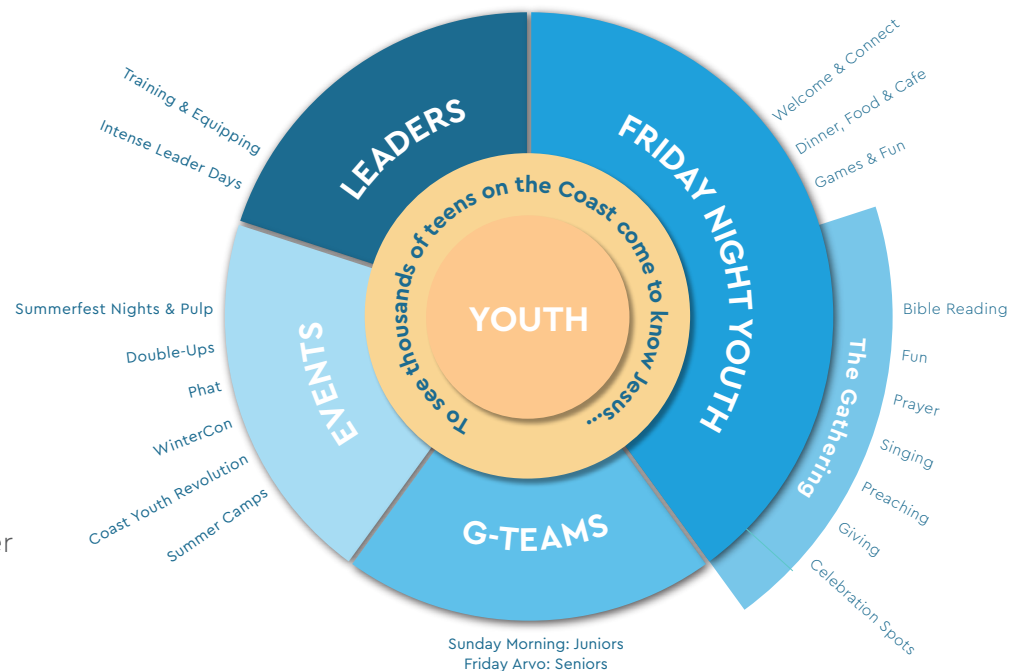
- **Duncan Sutherland**
- Sandy Proctor
- Madi Farmer
- Reece Wallace (MTS)
- James Stewart (MTS)
- Rebekah Giles (MTS)
- Jacob de Witte (MTS)
- Ben Thomas (MTS)
- Neo Titus (MTS)
- Nic Bell
- Abigail Verster

Serving alongside a further 50 youth leaders and 34 other volunteers.

Celebrating & Giving Thanks For God's Work in 2025

We praise God that:

- We are seeing an average of 242 teenagers every Friday night gather for fun, fellowship and enriching time in God's word.
- EV Youth is not simply a big crowd, but one of commitment and depth with 148 meeting weekly in g-team bible studies and 93 serving.
- He continues to change and transform lives with 9 new professions of faith and 13 significant confirmations of faith in 2025.



EV MORNING

OUTCOME: To make deep disciples in ever increasing number and into future generations to the glory of God.

Growing Together

We pray our church family will:

- Grow in number through people becoming followers of Jesus, returning to their walk with Jesus, moving from our EV Night congregation and welcoming those looking for a Bible-based church.
- Be united in and around Jesus and his mission regardless of background, and concerned to see the next generation raised and reached in Christ.

2026 LEADERSHIP TEAM:

- **Jez Reynolds – Focus Leader**
- Luke Fotheringham – Magnification
- Adrian Haynes – Mission
- Tania Cklamovski – Membership
- Ben Lattimore – Maturity
- Kareena Seifert – Ministry
- Jo Hill – EV Kids
- Ngaire Yeats – Team Support

Celebrating & Giving Thanks For God's Work in 2025

We praise God that:

- Services grew 8% to average 1480 people gathering by the end of the year. Our EV Kids average attendance was 370, with some weeks being over 400!
- We brought the need to make more space for our EV Kids to church, who quickly and generously gave towards the project. Two new classrooms were built by converting 'The Stable' storage area, which are proving to be such a blessing to disciple kids in!
- Summerfest (January 2026) was our biggest ever! We added an afternoon program for Vortex (Years 5–6) which was a great success and made room in the morning for more people. We've seen many of the new families come back to Church and Churn.
- We met over 800 new adults and kids through our morning services 'front door' in 2025.



EV NIGHT

OUTCOME: To make deep disciples of the young adults of the Central Coast in ever increasing number to the glory of God.

Growing Together

We pray our church family will:

- Grow deeply in their knowledge and love of God through Jesus Christ.
- Live for the honour and praise of God above all else.
- Warmly reach out to those around them with the gospel.

2026 LEADERSHIP TEAM:

- **Dan Ford – Focus Leader**
- Matt Evans – Maturity
- Tamara Barwise – Ministry/Maturity
- Tim Wallace – Mission (Intern)
- Holly Stewart – Membership (MTS)
- Neo Titus – Magnification (MTS)
- Madi Osborne – Team Support

Celebrating & Giving Thanks For God's Work in 2025

We praise God that:

- EV Night continued to grow in number in 2025.
- There were more people in Growth Groups than any year previously.
- 200+ people visited EV Night across 2025 to consider the things of Jesus.
- 103 people connected to EV Night members came along to the Life series in 2025.
- 30 school leavers moved from EV Youth into EV Night, joining growth groups and ministry teams.
- Our congregation continues to stretch in sacrificial serving, running the Sunday night service itself, as well as contributing significantly to EV Youth and EV Kids ministries.



MINISTRY SUPPORT

OUTCOME: Ministry Support serves the discipleship ministries of EV Church, providing the supporting venues, infrastructure and systems.

Growing Together

We pray that the ministry support team will:

- Support the ministries of EV with great Facilities, IT systems, Financial services, Hospitality, Communications, and good Governance and Risk management.

Celebrating & Giving Thanks For God's Work in 2025

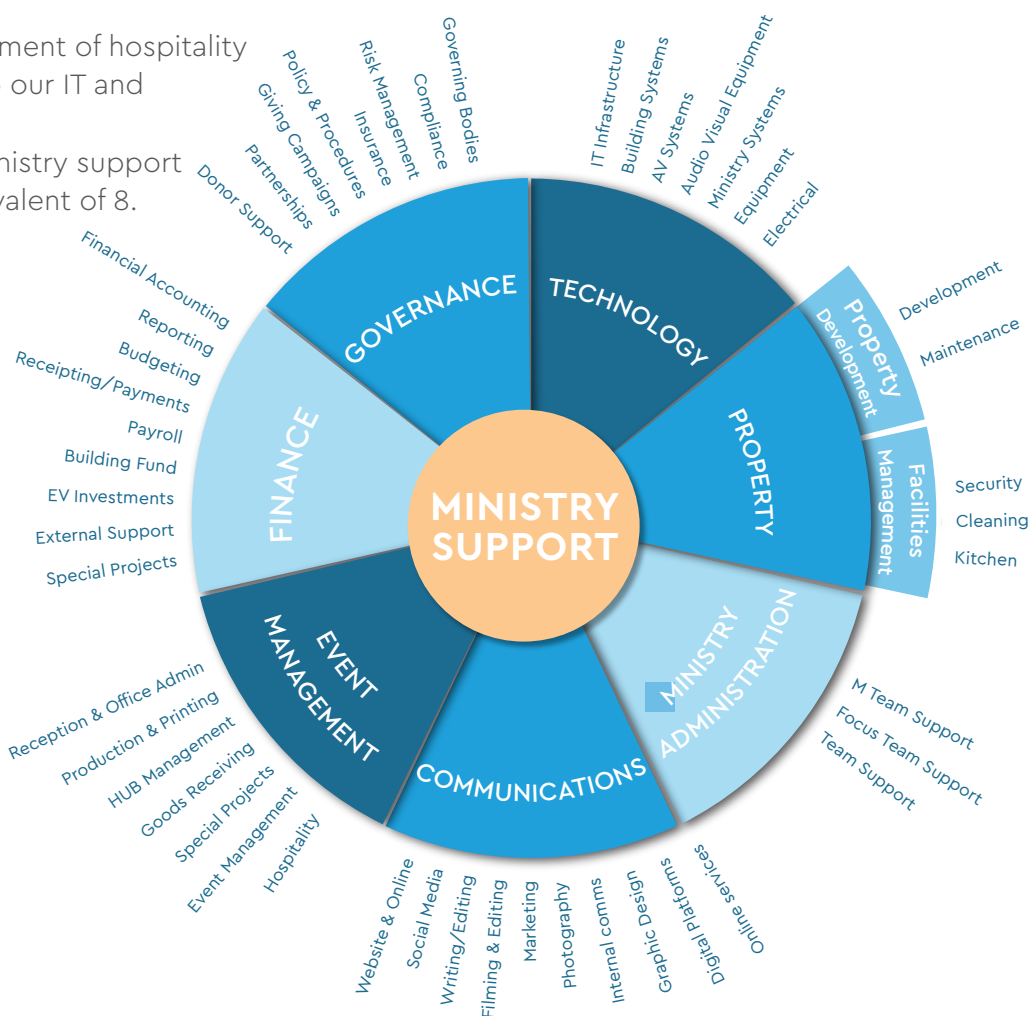
- For the development of the new kids classrooms in 'The Stable' storage area, providing much needed space, especially for our kids team.
- For the upgrade of drainage, additional car parking spaces and fitout of the storage shed during the year supported generously by gifts in-kind from the church family.
- For the successful hosting of the Reach Australia Conference with 1300 attending.
- For the many serving week in week out to provide safe, clean and maintained venues for our ministries.
- For the ongoing development of hospitality systems and upgrades to our IT and electrical systems.
- In 2026 EV has 11 paid ministry support staff with a full-time equivalent of 8.

2026 LEADERSHIP TEAM:

- Terry Cave – General Manager**
- Michael Larri – Finance
- Adrian Tindall – IT, Electrical and AV
- Tony Mitchell – Facilities*
- Stephen Morgan – Facilities*
- Gabrielle Steinbeck – Events*
- Sophie Totonjian – Hospitality & Events lead*
- Simon Totonjian – Kitchen Management*
- Anne Boyle – Senior Pastor/Executive Pastor PA & Team Support
- Carolina Redondo – Team Support*
- Jez Reynolds – Head of Communications***
- Rachael Vant – Communications*
- Alex Larri – Communications

Serving alongside another 100 volunteers.

*part time



1. 2025 FINANCIAL SUMMARY

This financial Summary is divided into two parts:

GENERAL MINISTRY which is about financing all our activities to make and deepen disciples including our pastoral team and operational costs.

PROPERTY DEVELOPMENT which is about financing property and facility development including the financing of our loans.

We keep the income and expenditure for these two areas and some others separate to allow donations to be directed to varying targets and needs and to honour donor intentions.

GENERAL MINISTRY REPORT

We finished the year with a wonderful response to the needs of our general giving, \$109,058 above budget. However, a deferral of Gospel Partners giving of \$100,000 led to a giving deficit of \$33,214.

General Ministry Income

General Giving

In general giving, as noted above, we finished the year \$109,058 or 3.4% favourable to budget. This was achieved through a groundswell response after reporting we were \$50,000 behind budget at the end of November.

Gospel Partners

The Gospel Partners program was established some years ago to facilitate larger gifts to support EV Church's growth as well as contributing to the growth and health of evangelical churches in Australia and beyond. Gospel Partners is independent of General Giving and is not included in the general giving updates to church. \$100,000 of this gospel giving has been deferred to future years, resulting in the budget variance.

MTS Support

A statement of MTS income and expenditure can be found on page 31.

"Other" Income items

The significant variances in other income are as follows:

- **Facility Rental income** – unfavourable due to reduced external facility use, including losing an existing regular booking. Noting a surplus in other income for external catering and streaming external events, we continue to seek new opportunities to hire out our facilities.
- **Reach Conference income** – favourable by \$28,445 due to generous volunteers giving their time, which helped keep costs down.
- **Other income** – Favourable to budget of \$24,798, including GST refunds and the provision of accounting services to other organisations.

General Ministry Expenses

The overall net cost for the ministry areas was \$22,664, favourable to budget.

The significant variances were as follows:

- **Maturity** - favourable due to lower-than-expected staffing costs in Kids Biz (a ministry related to Day Groups).
- **Mission** – unfavourable due to higher event and speaker costs.
- **Membership** – unfavourable due to increased catering costs.
- **MTS** – favourable due to MTS Conf/Camp Registration costs being lower than expected.
- **Next Gen** - unfavourable due to increased catering costs.
- **Ministry Support** - unfavourable due to higher-than-expected insurance costs.
- **Staff costs** – unfavourable due to higher travel and catering costs.

PROPERTY DEVELOPMENT GIVING

New Rooms for EV Kids

The growth in our EV Kids ministry has been extraordinary, and in 2025, we needed to take action to create space for the additional classes required for 2026. This was achieved by renovating 'The Stable' storage area and repurposing the 'Covid' shed for storage. The project was a great success, and the first stage was completed under budget. Our fundraising target was \$300,000 and we ended up raising \$368,024 over two months. The current surplus will be applied to works in the 'Void' space, needed as a consequence of creating the new EV Kids rooms and to other developments to support the EV Kids ministries.

It was also pleasing and important to see the property giving surplus that will contribute to offset property maintenance and interest rate rises. This surplus resulted from;

- EV Grow pledges being fulfilled with a surplus to budget of \$27,341, along with a one-off donation of \$30,000 towards a replacement sound desk.
- Surplus to budget on our interest income of \$5,141, giving a total surplus to budget of \$130,506.

This all resulted in one-off gifts towards Property Project Fundraising of \$398,024 and significant in kind contributions of congregation members, enabling the following property development projects for the year:

2025 Property Projects

- Converted 'The Stable' storage space into two fantastic classrooms, enabling an additional 40 kids per service to be in EV Kids on a Sunday, and providing space for many more kids from non-church families to hear the gospel at Summerfest.
- Converted the 'Covid' shed into a lockable storage space.
- Further car parking and drainage improvements.

- Started to utilise our second exit in peak periods, onto Portsmouth Rd.
- IT equipment and sound desk replacement.
- Renovated our lower staff offices to address WHS risks.
- Necessary replacement of some air conditioning units in the staff offices.
- Upgraded our AV systems to improve the sound quality of our live streams.

We are also thankful to God for the generous financial contributions of church family members, that have enabled these projects to be completed successfully.

OVERALL RESULT

The overall Income and Expense result, including provisions and depreciation, was \$388,371, which was \$122,441 favourable to budget.

1. 2025 FINANCIAL SUMMARY

Figure 1.
Where general ministry gifts and other income are spent:

- Departments (M's, Kids, Youth)
- Ministry Training
- Administration
- Facilities
- Ministry Staff

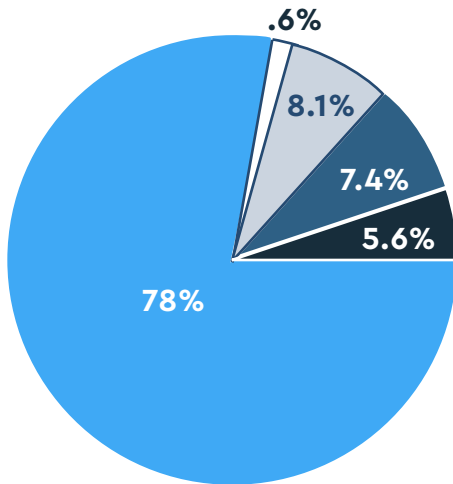
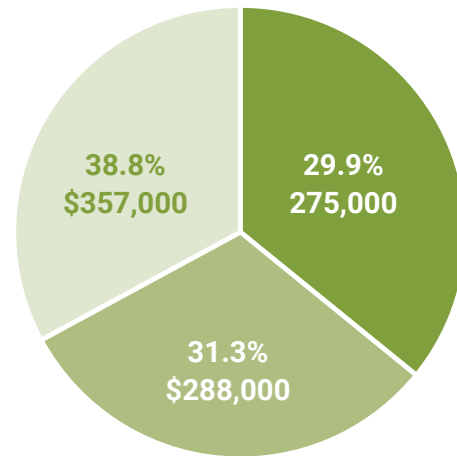


Figure 2.
Where property gifts are spent:

- Interest
- Loan reduction
- Property Capital expenditure



STAFF COSTS EXPLAINED

Staff remuneration (including that of the Senior Minister) is determined by the Remuneration Model approved by the Church Council (based on the Sydney Anglican model). Across the team at EV, we utilise different employment mechanisms to free the team up for ministry appropriate to the position. These include permanent employment, part-time, casual and volunteer roles; some roles are also connected to industry awards (such as our administrative team).

Staff salaries and wages, as reported in the financials, include the full stipends and salaries, superannuation and 'benefits' – some of which contribute to the costs of ministry such as general expenses, housing, phone, travel, conferences and hospitality. Staff costs expense line excludes MTS employment costs (reported in MTS expenditure) and casual staff supporting specific ministries such as Kids Biz (reported in the Maturity line).

EV CHURCH 2025 FINANCIAL SUMMARY		2025 ACTUAL	2025 BUDGET	VARIANCE
GENERAL MINISTRY				
INCOME	Giving - General	3,309,741	3,200,683	109,058
	Giving - Gospel Partners	570,000	670,000	-100,000
	Giving - Ministry Training Strategy	329,006	371,278	-42,272
	Giving Income Subtotal	4,208,747	4,241,961	-33,214
	Facilities Rental Income	42,132	50,000	-7,868
	Reach Aust Conference	128,445	100,000	28,445
	Grant Income	3,967	3,000	967
	Trust Distribution from EV Investments	23,852	24,000	-148
	Other Income	67,498	42,700	24,798
	Other Income Subtotal	265,894	219,700	46,194
Total Income	4,474,641	4,461,661	12,980	
NET EXPENDITURE OF MINISTRY AREAS	Magnification	-8,136	-7,785	-351
	Maturity	-12,447	-30,860	18,413
	Ministry	-594	-1,000	406
	Mission	-22,325	-19,937	-2,388
	Membership	13,194	15,793	-2,599
	MTS	-359,006	-371,278	12,272
	NextGen - EV Youth and Kids Ministry	3,661	7,622	-3,961
	Ministry Support	-330,833	-312,995	-17,838
	Staff Salaries and Wages	-3,449,371	-3,442,394	-6,977
	Staff Costs	-28,842	-23,850	-4,992
	Property Management	-248,129	-249,976	1,847
	Total Expenditure	-4,442,828	-4,436,660	-6,167
	Operations - Surplus / Deficit	31,814	25,001	6,813
	Operations - Capex	-9,150	-25,000	15,850
	Operations & Capex - Surplus / Deficit	22,664	1	22,663
PROPERTY DEVELOPMENT				
INCOME	Giving - School Building Fund	583,341	556,000	27,341
	Interest Income - Bank & Other	38,741	33,600	5,141
	Project Giving - New Kids Rooms	368,024	300,000	68,024
	Project Giving - Other	30,000	0	30,000
Total Income	1,020,106	889,600	130,506	
EXPENSES	Interest Expenses - Loans & Other	-272,854	-287,951	15,097
	Other Expenses	-2,639	-720	-1,919
	Total Expenses	-275,493	-288,671	13,178
	Property Development - Surplus / Deficit	744,613	600,929	143,684
	Loan Principal Payment - Equipment	62,615	0	62,615
	Loan Principal Payment - Property	-269,742	-283,087	13,345
	Property Development - New Kids Rooms	-287,539	-300,000	12,461
	Property Development - Other	-69,312	-20,000	-49,312
	Property Development incl Capex - Surplus / Deficit	180,635	-2,158	182,793
	EV Church incl Capex - Surplus / Deficit	203,299	-2,157	205,456
EV Church excl Capex & Provisions - Surplus / Deficit	776,427	625,930	150,497	
Year End Adjustments - Depn & Leave Provisions	-388,056	-360,000	-28,056	
Overall EV Church Accounts - Surplus / Deficit	388,371	265,930	122,441	

2. 2025 BALANCE SHEET

WORKING CAPITAL

EV Church's gross working capital (that is, current assets less current liabilities) has increased through 2025 from \$411,133 to \$530,695. The growth in reserves is offset by amounts committed to the EV Kids project of \$80,485.

NON-CURRENT ASSETS

Non-Current Assets increased slightly by \$21,457.

This was impacted by:

- An increase in furniture and equipment purchases less depreciation, giving a net increase of \$20,737.
- A reduction in building and improvements due to depreciation, giving a net reduction of \$14,941.
- An increase of \$15,661 to purchase a utility vehicle to be used in conjunction with the new storage shed.

EV INVESTMENTS

Many of our church family have investments with 'EV investments'. The balance of those investments at the end of 2025 was \$2,472,901 – an increase on the previous year of \$226,114.

These funds are invested into offset accounts against the EV Church loans, earning the interest rate of the loan, less 1.5%. Investors may choose to receive a current market rate or nominate a

lower rate. In this way, the trust earns an income that is then distributed to EV Church. In 2025, this contributed \$23,852.

Current Liabilities

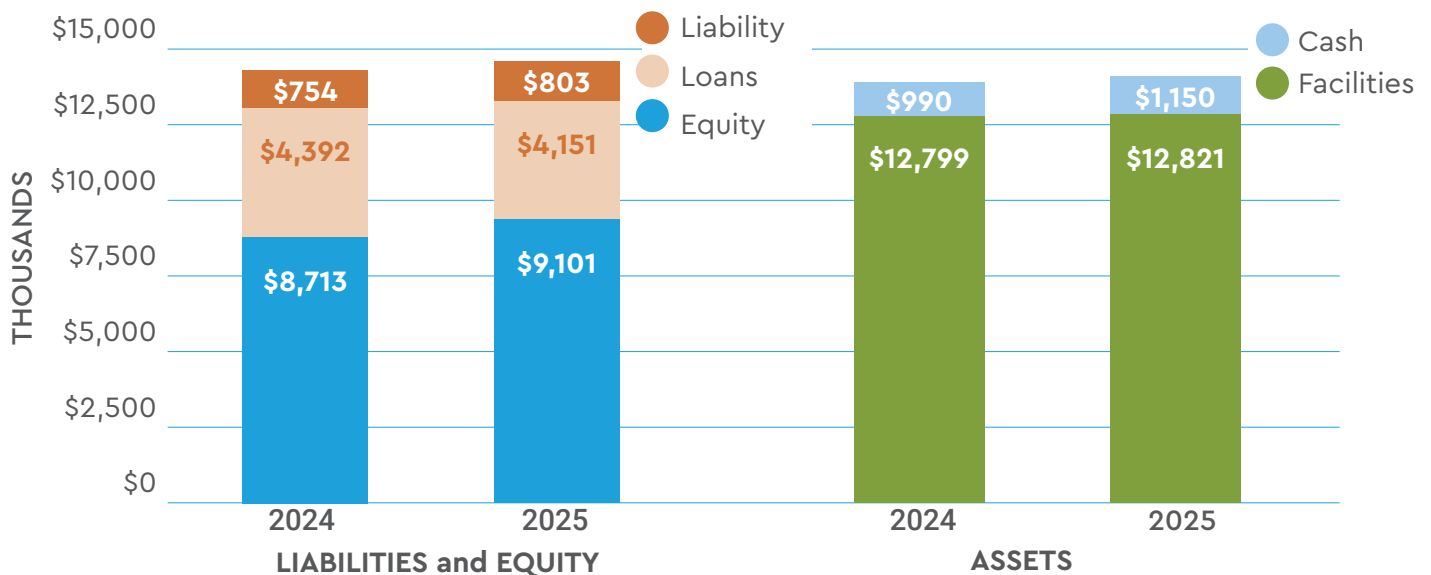
The Bequest Funds held in trust, of \$193,234, is a legacy which is to be disbursed at the direction of the Senior Minister in the future, to support mission and church planting in Australia.

The MTS Apprentice Support balance of \$75,820 (reduced from \$116,015 in 2024) are funds specified for Ministry apprentices beyond the funding requirements to the end of 2025, and will be allocated to cover any shortfall in funding for the coming years.

The Welfare Funds in Trust, of \$25,426, represent accumulated funds to support those in need in our community. In 2025 the income was \$10,771 and expenditure \$13,854. These funds were used to support those needing counselling, crisis accommodation, emergency finances, and healthcare expenses.

Equipment Finance – An equipment finance loan of \$47,055 was used to purchase a new sound desk to replace our existing outdated equipment.

Property and Building Loans – In 2025, we reduced the balance on our property and building loans by \$288,000 to \$4,103,577. We also note that EV Church has a redraw facility against our loans of \$325,000.



EV Church Balance Sheet		ACTUALS DEC 31, 2024	ACTUALS DEC 31, 2025
ASSETS			
Current Assets			
Cash & Cash Equivalents			
Cash at Bank & On Hand		457,943	705,646
School Building Fund A/c		392,687	428,770
EV MTS Scholarship Fund A/c		40,498	3,325
MTS Apprentice Support		86,317	9,060
EV Investment Trust		2,246,787	2,472,901
Total Cash and Cash Equivalents		3,224,232	3,619,702
Total Receivables		12,793	2,751
Total Other Current Assets		69,072	101,045
Total Current Assets		3,306,098	3,723,498
Non-current Assets			
Total Buildings & Improvements		7,000,434	6,985,493
Total Furniture, Fixtures and Fittings		228,967	249,704
Motor Vehicles		0	15,661
Total Land		5,570,000	5,570,000
Total Non-current Assets		12,799,401	12,820,858
TOTAL ASSETS		16,105,498	16,544,356
LIABILITIES			
Current Liabilities			
Trade Payables		69,535	70,591
Other Payables		27,278	17,741
Payroll Liabilities		53,698	122,748
Bequest Funds in Trust		193,234	193,234
MTS Apprentice Support		116,015	75,820
Receipts in Advance		24,405	53,537
Welfare Funds in Trust		28,509	25,426
Employee Benefits		135,504	144,408
Equipment Loan		0	16,397
Loan - EV Investment Trust		2,246,787	2,472,901
Total Current Liabilities		2,894,965	3,192,803
Non-current Liabilities			
Property and Building Loans		4,391,941	4,103,577
Equipment Loan		0	47,055
Employee Benefits		105,664	99,623
Total Non-current Liabilities		4,497,605	4,250,255
TOTAL LIABILITIES		7,392,571	7,443,059
NET ASSETS		8,712,928	9,101,297
EQUITY			
Asset Revaluation Reserve		1,136,165	1,136,165
Equity & Retained Earnings		7,305,368	7,576,761
Surplus/Deficit		271,395	388,371
TOTAL EQUITY		8,712,928	9,101,297

3. BUDGET SUMMARY 2026

GENERAL MINISTRY BUDGET SUMMARY 2026

This is the main budget of the church family and supports our ministry and mission together.

2025 has continued the pattern of encouraging growth with a continued increase in adult attendance by 8%. It is wonderful to see the fruits of the ministry, yet this brings with it challenges. We are feeling the challenges of warmly welcoming new people every week, with a need to grow teams, provide space for our kids and youth programs, address the need for car parking, and move on and off site efficiently.

The most immediate and visible constraint is parking and getting on and off the site. Our goal is to reduce friction for newcomers and regulars, improve safety, and support on-time service transitions. In the short term, we will continue to optimise how we use the site (including traffic flow). In the medium term, we are exploring opportunities for additional capacity through the potential purchase or renting of adjacent properties. This is a key focus area for 2026.

There have only been small movements in staffing for 2026. There is a small net increase in our ministry support area as we continue to build our catering and team support.

General Ministry Income

In 2026 we are budgeting for an 8% increase in general ministry income. We believe this is achievable due to our experience of significant congregational growth, reflected in attendances, with numbers in our growth groups also at a record high.

Inflation and interest rate pressures re-emerged in the later quarter of 2025 and may impact further in 2026. We do understand some families will be experiencing cost of living pressures and are under some financial stress. Despite these financial challenges, the EV Church family have been generous in its giving.

We are praying and seeking to encourage those joining church, to be captured by the gospel vision and support our mission financially.

As mentioned above, Gospel partners are pledging generous support over the coming years to allow a higher level of staffing to support ongoing growth of the ministry.

General Ministry Expenses

Apart from the increase in the staffing budget, the other significant increases are as follows:

- **MTS** – costs have increased due to an increase in the minimum wage rate, which will be offset by individual fundraising through the year.
- **Next Gen and Membership** – A slight increase in catering costs for both of these areas.
- **Ministry Support** - increases in our support of FIEC, workers' compensation premiums and insurance premiums.
- **Maturity** - increased to help cover the cost of interpreters for our Auslan service.
- **Staff Costs** - we have introduced a new line item in 2025 to provide greater transparency. It incorporates staff costs, such as training, development and conferences (not salaries). There is an increase in the cost of conferences for staff due to a higher number of staff attending our regular conferences, and a USA exposure trip for a few staff, run in conjunction with Reach Australia.
- **Property Management** – facilities rental income is down with fewer hirers and costs across the board rising – including the cost of maintaining a vehicle to move equipment around the site.

All other areas have savings or only small increases.

PROPERTY DEVELOPMENT BUDGET

The loan interest and repayments reflect EV's repayment schedule and assumes an increase of interest rates across 2026, an initial rate of 6.35% increasing to 6.75% in May, going to 7% in August for the remainder of the year. (The above rates are assumptions only.)

Budgeting to make \$571,324 in repayments. Our interest expense is lowering, due to the reduction in the amount owing.

The Property Development giving target reflects the pledges the church family made during the EV Grow campaign in 2023. As reported against pledges, we were ahead of budget by \$27,341 in 2025, providing headroom to support property maintenance and equipment replacement costs during 2026.

Property works in 2026

In 2026 we are focused on progressing necessary approvals and design for future developments. Since our facilities are ageing, we expect an increase in maintenance costs for our buildings – The Round was completed 13 years ago in 2013. With parking capacity being reached in peak times, we will be exploring opportunities to optimise parking with the space we have, as well as continuing to explore rentals or purchasing of adjacent properties.

We will also be exploring: redevelopment of the kids playground outside the Round, placing a concrete floor into the 'Void' space for storage, and other smaller upgrades to walkways, and storage across our community spaces.

EV Grow 2026

The 2026 EV Grow campaign is in Term 4 of this year. We will be asking people to renew or make a 3-year pledge from 2027 to support both our loan repayments and to cover our costs for property maintenance, alongside considering a one-off gift this year towards future property development. The once-off gift would support property development initiatives being explored across key areas; being our kids facilities, community access, storage, car parks and office space, to be completed in 2027.

More details of these plans will be provided as the year progresses and into the EV Grow campaign.

3. BUDGET SUMMARY 2026

EV CHURCH 2026 BUDGET SUMMARY		2025 ACTUAL	2025 BUDGET	2026 BUDGET	Change from 2025 Actual	
GENERAL MINISTRY						
INCOME	Giving - General	3,309,741	3,200,683	3,571,967	262,226	
	Giving - Gospel Partners	570,000	670,000	570,000	0	
	Giving - Ministry Training Strategy	329,006	371,278	383,044	54,038	
	Giving Income Subtotal	4,208,747	4,241,961	4,525,011	316,264	
	Facilities Use Income	42,132	50,000	39,600	-2,532	
	Reach Aust Conference	128,445	100,000	160,000	31,555	
	Grant Income	3,967	3,000	2,000	-1,967	
	Trust Distribution from EV Investments	23,852	24,000	24,000	148	
	Other Income	67,498	42,700	40,750	-26,748	
	Other Income Subtotal	265,894	219,700	266,350	456	
Total Income	4,474,641	4,461,661	4,791,361	316,720		
NET EXPENDITURE OF MINISTRY AREAS	Magnification	-8,136	-7,785	-10,800	-2,664	
	Maturity	-12,447	-30,860	-29,295	-16,848	
	Ministry	-594	-1,000	-1,000	-406	
	Mission	-22,325	-19,937	-13,265	9,060	
	Membership	13,194	15,793	11,613	-1,581	
	MTS	-359,006	-371,278	-383,044	-24,038	
	NextGen - EV Youth and Kids Ministry	3,661	7,622	5,710	2,049	
	Ministry Support	-330,833	-312,995	-372,002	-41,169	
	Staff Salaries & Wages	-3,449,371	-3,442,394	-3,666,196	-216,825	
	Staff Costs	-28,842	-23,850	-57,600	-28,758	
	Property Management	-248,129	-249,976	-256,321	-8,193	
	Total Expenditure	-4,442,828	-4,436,661	-4,772,200	-329,373	
	Operations - Surplus / Deficit	31,814	25,000	19,161	-12,653	
	Operations - Capex	-9,150	-25,000	-18,000	-8,850	
	Operations & Capex - Surplus / Deficit	22,664	0	1,161	-21,503	
	PROPERTY DEVELOPMENT					
	INCOME	Giving - Building Fund	583,341	556,000	560,000	-23,341
Interest Income - Bank		38,741	33,600	33,600	-5,141	
Project Giving - New Kids Rooms		368,024	300,000	0	-368,024	
Project Giving - Other		30,000	0	250,000	220,000	
Total Income		1,020,106	889,600	843,600	-176,506	
EXPENSES	Interest Expense - Property	-272,854	-287,951	-263,884	8,970	
	Interest Expense - Equipment	0	0	-10,023	-10,023	
	Other Expenses	-2,639	-720	-3,000	-361	
	Total Expenses	-275,493	-288,671	-276,907	-1,414	
	Property Development - Surplus / Deficit	744,613	600,930	566,693	-177,920	
	Loan Principal Payment - Property	-269,742	-283,087	-307,440	-37,698	
	Loan Principal Payment - Equipment	62,615	0	-18,684	-81,299	
	Property Development - New Kids Rooms	-287,539	-300,000	0	287,539	
	Property Development - Other	-69,312	-20,000	-240,569	-171,257	
	Property Development incl Capex - Surplus / Deficit	180,635	-2,157	-0	-180,635	
EV Church incl Capex - Surplus / Deficit	203,299	-2,157	1,161	-202,138		
EV Church excl Capex & Provisions - Surplus / Deficit	776,427	625,930	585,854	-190,573		
Year End Adjustments - Depn & Leave Provisions	-388,056	-360,000	-360,000	28,056		
Overall EV Church Accounts - Surplus / Deficit	388,371	265,930	225,854	-162,517		

4. MINISTRY TRAINING GIVING

The MTS (Ministry Training Strategy) program has provided a wonderful opportunity over the last 28 years in raising future gospel workers. Through your support, over 67 MTS apprentices have participated in a 2 or 3 year program. They have all been equipped for a lifetime of ministry and many are now in full time paid ministry or mission work.

MINISTRY TRAINING STRATEGY BUDGET

MTS is about raising up the next generation of church leaders. This has been a foundational piece of EV's ministry from the beginning.

Apprentices work across a whole range of ministry areas alongside the staff team, who mentor and train them. The program is for three years and over this period they also complete the first year of a theological degree with Moore College or Sydney Missionary Bible College.

Last year, 3 apprentices completed the program and for 2026 we have a total of 7 apprentices:

- 2 who commenced in 2024
- 2 who have commenced in 2025
- 3 who have commenced this year in 2026.

While undertaking MTS, the apprentices are paid an amount equivalent to adult apprentices. This is around \$50,000.

They are required to raise this money from supporters. This is an important learning experience for future gospel work. This funding covers more than 95% of the total costs of MTS.

In addition, contributions are made by donors to an MTS General fund, which funds the MTS training costs that EV incurs, covering the cost of conference and camps and other training costs.

We increased the support of apprentices to be equivalent to that of an industry 'adult apprentice'. This led to a small shortfall in funding in 2025, which we don't anticipate being an issue going forward. There was an MTS funding deficit of \$30,000 comparing income to costs.

For 2026 the budget for MTS has increased to cover CPI in the apprentice salaries only, as we have the same number of apprentices in 2026, as we did in 2025. Overall the budget has increased on actuals by \$24,038 to \$383,044 (or \$11,766 on budget).

In 2026, the support required from donors has increased by CPI or approx. \$2,200 per person.

			Purpose				Focus				
			Magnification	Mission	Membership	Ministry	Maturity	EV Morning	EV Night	EV Youth	EV Kids
			MTS Apprentices	Jacob deWitt	Year 1 – MTS Apprentice					●	
Bek Giles	Year 1 – MTS Apprentice									●	
James Stewart	Year 1 – MTS Apprentice									●	
Ben Thomas	Year 2 – MTS Apprentice				●			●		●	●
Neo Titus	Year 2 – MTS Apprentice	●							●	●	
Holly Stewart (Jamieson)	Year 3 – MTS Apprentice				●				●	●	
Reece Wallace	Year 3 – MTS Apprentice			●						●	

2025 MTS Funding Summary	2025 Actuals	2025 Budget	2026 Budget
MTS General from B.Sheet	22,094	30,000	30,000
MTS Funds from B.Sheet	306,447	341,278	353,044
Other MTS Income	464		
	329,005	371,278	383,044
MTS Associated Expenses	-18,985	-30,000	-30,000
Apprentice Wages	-340,020	-341,278	-353,044
	-359,005	-371,278	-383,044
Net Balance	-30,000	0	0

2026 - 1ST YEAR



Jacob

Bek

James

2026 - 2ND YEAR



Ben

Neo

2026 - 3RD YEAR



Reece

Holly

5. MISSION GIVING

2026 MISSION PARTNER GIVING TARGETS

Many EV Church members privately support different mission partners directly with mission agencies. This report only relates to giving that members have directed through EV Church accounts.

Targets are set for our core mission partners and progress is reported throughout the year in the EV News emails and in other communications.

The overall target for our core mission partners, church plants and other supporters in 2025 was \$170,500. The total mission giving for the year was \$202,716, including a one off Christmas appeal for Compassion Australia, for \$18,207. Most of the individual targets were met or exceeded, with a couple falling short. The reason for the shortfall for the Lewis's was because they finished up in Thailand and moved to the Central Coast before the end of 2025.

The mission team has been in communication with all our mission partners to discuss their support. In a number of cases we noted that there has been additional support from EV Church members that has not been directed through EV Church accounts.

Targets for 2026 have been set in consultation with our mission partners, church leadership and Church Council. The overall target for 2026 has been set at \$182,000.

In 2026 these are the following changes to our targets:

- A reduction for the Shadwicks, covering term 1 only. After 19 years serving at Newcastle UNI the Shadwicks are moving into pastoral work at their local church.
- An increase in target for Lachlan & Candy Grice, increasing to \$13,000, reflecting a full year of support (6 months only in 2025).
- New support for Matt & Caitlin Bakon, only covering for 6 months in 2026.
- Increase of \$2000 for R&E, bringing them into line with other fully supported mission partners.
- New support for the Gilham's, only covering 6 months in 2026.
- Removal of support for Daniel & Kimberley Lewis, as they transition out of Campus ministry.
- Removal of support for Manning Bible Church, as originally agreed.
- New support for The Foundry Church, a new church plant in Wallsend.

Our contribution to the Fellowship of Independent Churches (FIEC) has increased by \$3,000. This is a contribution from our ministry budget and supports the health and growth of FIEC nationally.

Let us continue to pray that the Lord would grow his kingdom and bring great honour to his name through our mission partners.



Mission Giving Targets	2025 ACTUAL	2025 TARGET	2026 TARGET
Core Mission Partners			
AFES – Shadwick (2026 support for Term 1 only)	13,055	13,000	3,500
AFES – Ewing	7,479	8,000	8,000
CMS – Galea	16,220	13,000	13,000
CMS – W&S	10,945	11,000	11,000
CMS – Grice	7,810	6,000	13,000
SIM – K	9,500	5,000	5,000
SIM – Bakon C&J	14,783	13,000	13,000
CMS – Bakon M&E (half year from July 2026)	0	0	6,500
SIM – R&E	11,865	11,000	13,000
CMS – Gilham (Half year from July 2026)	0	0	6,000
Campus Outreach – Lewis	9,510	11,000	0
Total	101,166	91,000	92,000
Church Planting			
Manning Bible Church Taree	882	2,500	0
The Foundry Church – Sam Broadfoot	0	0	12,000
Reach Aust/Geneva Push	1,460	5,000	3,000
Fellowship of Independent Evangelical Churches	72,055	72,000	75,000
Total	74,397	79,500	90,000
Totals	175,563	170,500	182,000
Other Support			
Anchor Church Coffs Harbour	1,780		
Grace Church Peninsula	5,800		
Compassion Australia	605	0	0
Christmas Giving	18,207	0	0
Lake Mac	240	0	0
Tuggerah Lakes Scripture Board	520	0	0
Total	27,152	0	0
Overall Totals	202,716	0	0

Note:

- These figures only show the giving to mission that has come through EV Church Accounts.
- Many congregation members also generously support mission organisations directly.

